

CRIMINALITY AND CRIMINAL JUSTICE

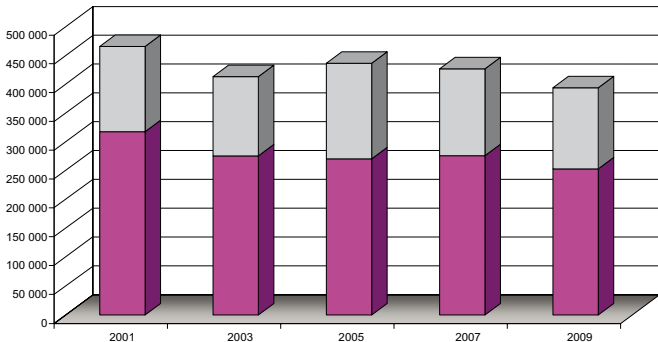
2001–2009



**PUBLISHED BY THE OFFICE
OF THE PROSECUTOR GENERAL
Hungary, 2010**

| Crimes | 2001 | 2003 | 2005 | 2007 | 2009 |
|--|---------|---------|---------|---------|---------|
| Total recorded crimes | 465 694 | 413 343 | 436 522 | 426 914 | 394 034 |
| Crimes against property, total ^{1/} | 317 900 | 275 891 | 270 740 | 276 193 | 253 366 |
| <u>of which:</u> | | | | | |
| those not exceeding the value limit for petty offences ^{2/} | 50 400 | 45 961 | 31 031 | 54 806 | 51 571 |
| burglary | 68 499 | 47 269 | 42 588 | 40 846 | 37 698 |
| theft of a motor vehicle ^{3/} | 23 367 | 18 525 | 16 178 | 15 017 | 11 212 |
| theft from a motor vehicle | 30 325 | 24 075 | 25 131 | 20 982 | 14 460 |
| fraud | 35 678 | 33 151 | 22 431 | 41 250 | 29 555 |
| Forgeries ^{4/} | 58 501 | 55 141 | 62 277 | 58 815 | 50 027 |
| Crimes involving direct attack against the person, total | 20 338 | 19 752 | 20 089 | 18 717 | 19 844 |
| <u>of which:</u> | | | | | |
| homicide, including attempt | 408 | 378 | 313 | 296 | 275 |
| serious bodily harm, including attempt | 10 703 | 11 494 | 12 383 | 11 180 | 12 430 |
| kidnapping | 17 | 25 | 7 | 7 | 14 |
| rape ^{5/} | 506 | 535 | 642 | 468 | 525 |
| forcible homosexual contact ^{6/} | 83 | 16 | - | - | - |
| robbery ^{7/} | 3 623 | 3 606 | 3 338 | 3 536 | 3 316 |
| Crimes involving violence and hooliganism | 30 280 | 31 476 | 32 760 | 29 645 | 32 046 |

Proportion of crimes against property within the criminality



^{1/} Disregarding the damage caused by them.

^{2/} From 1 st June 2007 the value limit for petty offences was raised to 20.000 HUF.

^{3/} Unauthorized use of a vehicle also included.

^{4/} Misuse of document and counterfeiting if individual identification marks also included.

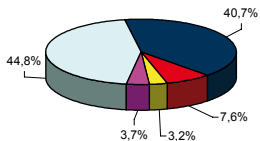
^{5/} Other sexual assaults also included.

^{6/} The offence has been deleted from the Criminal Code from 1st July 2003, according to the decision no. 37/2002 (IX. 4) of the Constitutional Court.

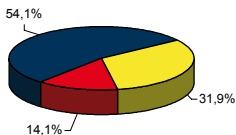
^{7/} Robbery through inebriation also included.

| Offenders | 2001 | 2003 | 2005 | 2007 | 2009 |
|---|---------|---------|---------|---------|---------|
| Recorded offenders, total | 120 583 | 118 145 | 133 790 | 116 161 | 112 830 |
| Crimes against property | 54 211 | 48 017 | 51 379 | 48 110 | 43 034 |
| <u>of which:</u> | | | | | |
| theft | 26 711 | 22 727 | 25 130 | 22 723 | 22 249 |
| burglary | 9 085 | 6 352 | 5 976 | 5 448 | 3 907 |
| robbery ^{1/} | 1 754 | 1 861 | 1 853 | 1 949 | 1 743 |
| Crimes against person | 8 486 | 8 555 | 9 083 | 8 090 | 11 434 |
| <u>of which:</u> | | | | | |
| homicide | 391 | 375 | 310 | 302 | 307 |
| Crimes against marriage, family, youth and sexual morals | 3 161 | 3 729 | 4 414 | 3 764 | 4 123 |
| <u>of which:</u> | | | | | |
| crimes against sexual morals | 705 | 678 | 696 | 576 | 648 |
| <u>of which:</u> | | | | | |
| rape | 182 | 148 | 153 | 96 | 120 |
| Drug offenders | 4 025 | 2 968 | 7 044 | 3 880 | 4 329 |
| Male offenders | 3 621 | 2 679 | 6 316 | 3 497 | 3 926 |
| <u>of whom:</u> | | | | | |
| child (under the age of 14) | 8 | 5 | 7 | 3 | 3 |
| juvenile (14 to 18 years) | 594 | 334 | 965 | 337 | 350 |
| young adult (18 to 24 years) | 2 117 | 1 547 | 3 621 | 1 808 | 1 824 |
| adult | 902 | 793 | 1 723 | 1 349 | 1 749 |
| Female offenders | 404 | 289 | 728 | 383 | 403 |
| <u>of whom:</u> | | | | | |
| child (under the age of 14) | 5 | 2 | 2 | 4 | 1 |
| juvenile (14 to 18 years) | 95 | 63 | 202 | 96 | 58 |
| young adult (18 to 24 years) | 220 | 147 | 354 | 171 | 217 |
| adult | 84 | 77 | 170 | 112 | 127 |

Ratio of offenders in regard to the crimes, 5 years average



Age structure of drug offenders in the average of the last 5 years



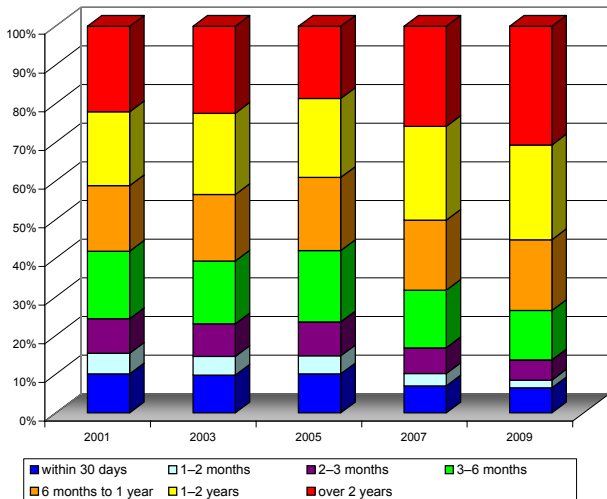
■ Against property
 ■ Against the person
 ■ Against marriage, family, youth and sexual morals
 ■ Drug offenders
 □ Other

■ Childe and juvenile ■ Young adult ■ Adult

^{1/} Robbery through inebriation also included.

| Accused persons | 2001 | 2003 | 2005 | 2007 | 2009 |
|--|---------|---------|---------|--------|--------|
| Accused persons, total | 105 203 | 101 458 | 104 647 | 94 125 | 91 387 |
| <i>of whom:</i> | | | | | |
| accused by indictment ^{1/} | 73 363 | 69 396 | 64 264 | 59 770 | 61 201 |
| accused in accelerated proceedings | 9 193 | 8 391 | 9 330 | 7 011 | 6 336 |
| accused in procedure without court hearing | 22 647 | 23 671 | 31 053 | 27 344 | 23 850 |
| Trials of first instance | 45 517 | 50 141 | 53 431 | 49 744 | 49 378 |
| Cases terminated with final sentences | 70 971 | 72 638 | 77 288 | 94 125 | 91 387 |
| Length of the criminal procedure in %: | | | | | |
| within 30 days | 10,1 | 9,8 | 10,1 | 7,0 | 6,5 |
| 1–2 months | 5,3 | 4,8 | 4,7 | 3,2 | 2,0 |
| 2–3 months | 8,9 | 8,5 | 8,7 | 6,6 | 5,2 |
| 3–6 months | 17,5 | 16,2 | 18,5 | 14,9 | 12,8 |
| 6 months to 1 year | 16,9 | 17,2 | 18,9 | 18,1 | 18,3 |
| 1–2 years | 19,1 | 21,0 | 20,4 | 24,3 | 24,5 |
| over 2 years | 22,1 | 22,5 | 18,7 | 25,9 | 30,7 |

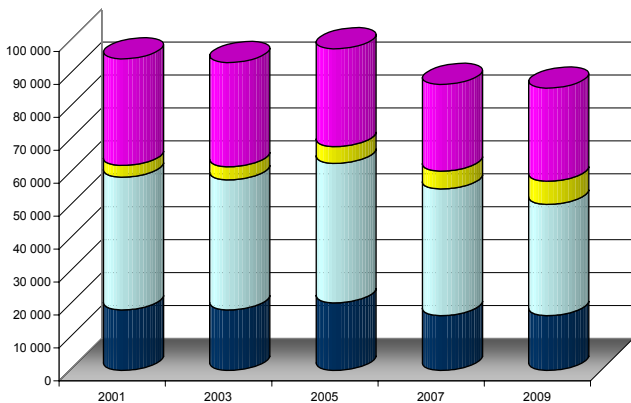
Length of the criminal proceedings from the beginning of the investigation to the final sentence



^{1/} Due to amendments of the Act XIX of 1998 on the Criminal procedure, that became effective from 1st July 2003, some parts of data can not be compared to the ones of the previous years.

| Convicted persons | 2001 | 2003 | 2005 | 2007 | 2009 |
|--|--------|--------|--------|--------|--------|
| Convicted persons, total | 94 538 | 93 422 | 97 558 | 86 705 | 86 028 |
| <u>of whom:</u> | | | | | |
| adult | 87 539 | 86 722 | 90 347 | 80 529 | 79 763 |
| juvenile | 6 999 | 6 700 | 7 211 | 6 176 | 6 265 |
| Sentenced to principal punishment | 76 180 | 75 033 | 77 035 | 70 161 | 69 040 |
| <u>of which:</u> | | | | | |
| life imprisonment | 9 | 22 | 10 | 16 | 15 |
| fix term imprisonment | 32 361 | 31 604 | 29 637 | 26 272 | 28 248 |
| community work | 3 524 | 3 974 | 5 067 | 5 465 | 7 022 |
| fine | 40 286 | 39 433 | 42 321 | 38 408 | 33 755 |

The evaluation punishments and measures (convicted persons)



- fix term imprisonment
- community work
- fine
- independently administered supplementary punishment, other measures

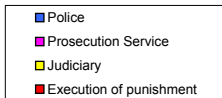
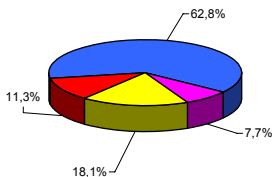
| Convicted persons | 2001 | 2003 | 2005 | 2007 | 2009 |
|---|-------------|-------------|-------------|-------------|-------------|
| Convicted persons, total | 94 538 | 93 422 | 97 558 | 86 705 | 86 028 |
| <u>of whom:</u> | | | | | |
| Crimes against the person | 7 114 | 7 534 | 7 589 | 6 502 | 7 584 |
| Traffic crimes | 15 108 | 16 071 | 17 648 | 17 232 | 13 780 |
| Crimes against marriage, family, youth and sexual morals | 2 158 | 2 358 | 2 922 | 2 769 | 2 935 |
| <u>of whom:</u> crimes against sexual morals | 737 | 679 | 677 | 561 | 543 |
| Crimes against the purity of state administration, the administration of justice and public life | 3 262 | 3 257 | 3 508 | 2 953 | 2 941 |
| <u>of which:</u> corruption | 387 | 361 | 339 | 285 | 217 |
| Crimes against public order | 18 520 | 18 920 | 21 204 | 19 137 | 18 866 |
| <u>of which:</u> misuse of drugs | 1 776 | 1 369 | 1 726 | 2 150 | 2 058 |
| Economic crimes | 4 005 | 5 068 | 6 014 | 4 444 | 4 891 |
| Crimes against property, total | 44 244 | 40 022 | 38 662 | 33 668 | 35 031 |
| <u>of which:</u> | | | | | |
| theft, burglary | 29 796 | 25 608 | 23 937 | 20 422 | 20 612 |
| embezzlement | 2 254 | 2 217 | 2 146 | 1 820 | 1 927 |
| fraud | 5 016 | 4 777 | 4 819 | 5 121 | 6 394 |
| robbery | 1 451 | 1 684 | 1 710 | 1 414 | 1 709 |
| Other crimes | 127 | 192 | 11 | 0 | 0 |
| Persons in custody | 2001 | 2003 | 2005 | 2007 | 2009 |
| Persons in custody, total | 18 603 | 16 691 | 14 226 | 12 358 | 13 836 |
| <u>of whom:</u> | | | | | |
| in preliminary arrest | 5 850 | 5 213 | 4 328 | 3 505 | 4 412 |
| sentenced to imprisonment | 12 753 | 11 478 | 9 898 | 8 853 | 9 424 |
| <u>of whom:</u> | | | | | |
| Hungarian | 12 348 | 11 142 | 9 183 | 8 612 | 9 181 |
| European | 376 | 296 | 622 | 202 | 213 |
| African | 8 | 11 | 17 | 10 | 5 |
| Asian | 20 | 23 | 67 | 25 | 23 |
| Others | 1 | 6 | 9 | 4 | 2 |
| Supplementary punishments, other measures | 2001 | 2003 | 2005 | 2007 | 2009 |
| Independently imposed supplementary punishments or other measures | 18 358 | 18 389 | 20 522 | 16 616 | 16 646 |
| Supplementary punishments or other measures imposed with principal punishments ^{1/, 2/} | 10 576 | 17 255 | 28 742 | 29 581 | 28 070 |
| <u>of which:</u> | | | | | |
| supervision by probation officer | 6 571 | 4 362 | 2 454 | 2 361 | 2 990 |
| expulsion | 988 | 757 | 770 | 516 | 419 |
| forfeiture of assets | 14 | 35 | 233 | 598 | 1 266 |
| confiscation | 2 681 | 2 759 | 3 326 | 3 111 | 3 126 |

^{1/} Figures after year 2003 comprehend the numbers of prohibition from public affairs and of prohibition from driving vehicles.

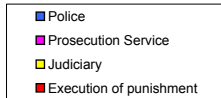
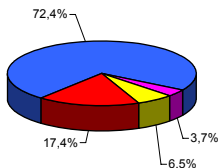
^{2/} Figures after year 2005 comprehend the supplementary punishments applied by the Military Prosecution Offices.

| Budget (in million HUF) | 2001 | 2003 | 2005 | 2007 | 2009 |
|--|-----------|-----------|-----------|-----------|-----------|
| 1./ Budget of the Police ^{1/} | 121 383,3 | 154 590,7 | 167 567,3 | 204 788,4 | 243 449,7 |
| 2./ Budget of the Public Prosecution Service | 15 120,0 | 21 388,0 | 29 157,0 | 29 822,0 | 29 973,9 |
| 3./ Budget of the Judiciary | 36 348,8 | 52 802,9 | 69 581,2 | 70 280,3 | 70 235,2 |
| - Supreme Court | 1 645,6 | 1 974,0 | 2 505,6 | 2 488,1 | 2 478,9 |
| - Regional Courts ^{2/} | - | 2 230,4 | 4 236,8 | 4 156,9 | 4 252,7 |
| - County (Capital) and local courts | 34 703,2 | 48 598,5 | 62 838,8 | 63 635,3 | 63 503,6 |
| 4./ Budget of the penitentiary establishments | 20 972,5 | 34 371,0 | 38 749,8 | 41 016,4 | 43 843,4 |

Composition of budget expenditure in 2009



Composition of the personnel in 2009



^{1/} Due to the structural changes in the budget, there might be differences in the data specified for each year.

^{2/} Regional Courts started their activities from 1st July 2003.

| Personnel | 2001 | 2003 | 2005 | 2007 | 2009 |
|---|--------|--------|--------|--------|--------|
| 1./ Personnel of the Police ^{1/} | | | | | |
| number | 28 845 | 29 518 | 28 627 | 26 334 | 32 474 |
| per cent | 100,0 | 102,3 | 99,2 | 91,3 | 112,6 |
| 2./ Personnel of the Public Prosecution Service | | | | | |
| a./ Office of the Prosecutor General | 112 | 107 | 113 | 108 | 111 |
| b./ Regional Prosecution Offices ^{2/} | 0 | 22 | 35 | 36 | 37 |
| c./ County (Capital) and local prosecution offices | 1 193 | 1 294 | 1 342 | 1 436 | 1 510 |
| d./ Total number | 1 305 | 1 423 | 1 490 | 1 580 | 1 658 |
| per cent | 100,0 | 109,0 | 114,2 | 121,1 | 127,0 |
| 3./ Personnel of the Judiciary | | | | | |
| a./ Supreme Court | 113 | 84 | 81 | 82 | 97 |
| b./ Regional Courts ^{3/} | 0 | 110 | 162 | 162 | 163 |
| c./ County (Capital) and local courts | 2 491 | 2 473 | 2 571 | 2 579 | 2 648 |
| <u>of which:</u> dealing with criminal cases | 815 | 883 | 935 | 951 | 1 002 |
| d./ Total number | 2 604 | 2 667 | 2 814 | 2 823 | 2 908 |
| <u>of which:</u> dealing with criminal cases | 841 | 928 | 1 000 | 1 017 | 1 064 |
| per cent (total) | 100,0 | 102,4 | 108,1 | 108,4 | 111,7 |
| per cent (criminal cases) | 100,0 | 110,3 | 118,9 | 120,9 | 126,5 |
| 4./ Personnel of the penitentiary establishments | | | | | |
| number | 5 588 | 6 615 | 7 382 | 7 372 | 7 786 |
| per cent | 100,0 | 118,4 | 132,1 | 131,9 | 139,3 |

Sources

Unified Criminal Statistics of the Investigation Authorities and the Public Prosecution

Egységes nyomozó hatósági és ügyészégi bűnügyi statisztika, ENYÜBS; OSAP 1228. nyt. sz.

Data Survey on Prosecutorial Activities before Criminal Courts

Vádképviseleti Informatikai Rendszer (VIR), OSAP 1523. nyt. sz.

Adult and Juvenile Defendants in Cases Completed with Final Sentence

A jogerős határozattal befejezett büntetőeljárások fiatal- és felnőttkorú vádlottjai, OSAP 1294-1295. nyt. sz.

Acts on the National Budget (Act CXXV of 1999, Act of CXXXIII 2001, Act CXVI of 2003

Act CLIII of 2005 and Act CLXIX of 2007)

Az 1999. évi CXXXV. tv., a 2001. évi CXXXIII. tv., a 2003. évi CXVI. tv., a 2005. évi CLIII. tv. és a 2007. évi

CLXIX. tv. (Költségvetési törvények)

Communication on the Personnel of the Ministry of Interior and Ministry of Justice and Law Enforcement

A Belügyminisztérium, illetve az Igazságügyi és Rendészeti Minisztérium személyügyi tájékoztatója

Communiqué on the Personnel of the Office of the Prosecutor General

Legfőbb Ügyészség személyügyi tájékoztatója

Communiqué on the Personnel of the Supreme Court

Legfelsőbb Bíróság személyügyi tájékoztatója

Data of the Ministry of Justice and the National Judicial Council

Az Igazságügyi Minisztérium és az Országos Igazságszolgáltatási Tanács Hivatalának adatai

Data of the National Police Headquarter

Országos Rendőr-főkapitányság adatai

..

^{1/} Actual professional staff.

^{2/} Regional Prosecution Offices started their activities from 1st July 2003.

^{3/} Regional Courts started their activities from 1st July 2003.